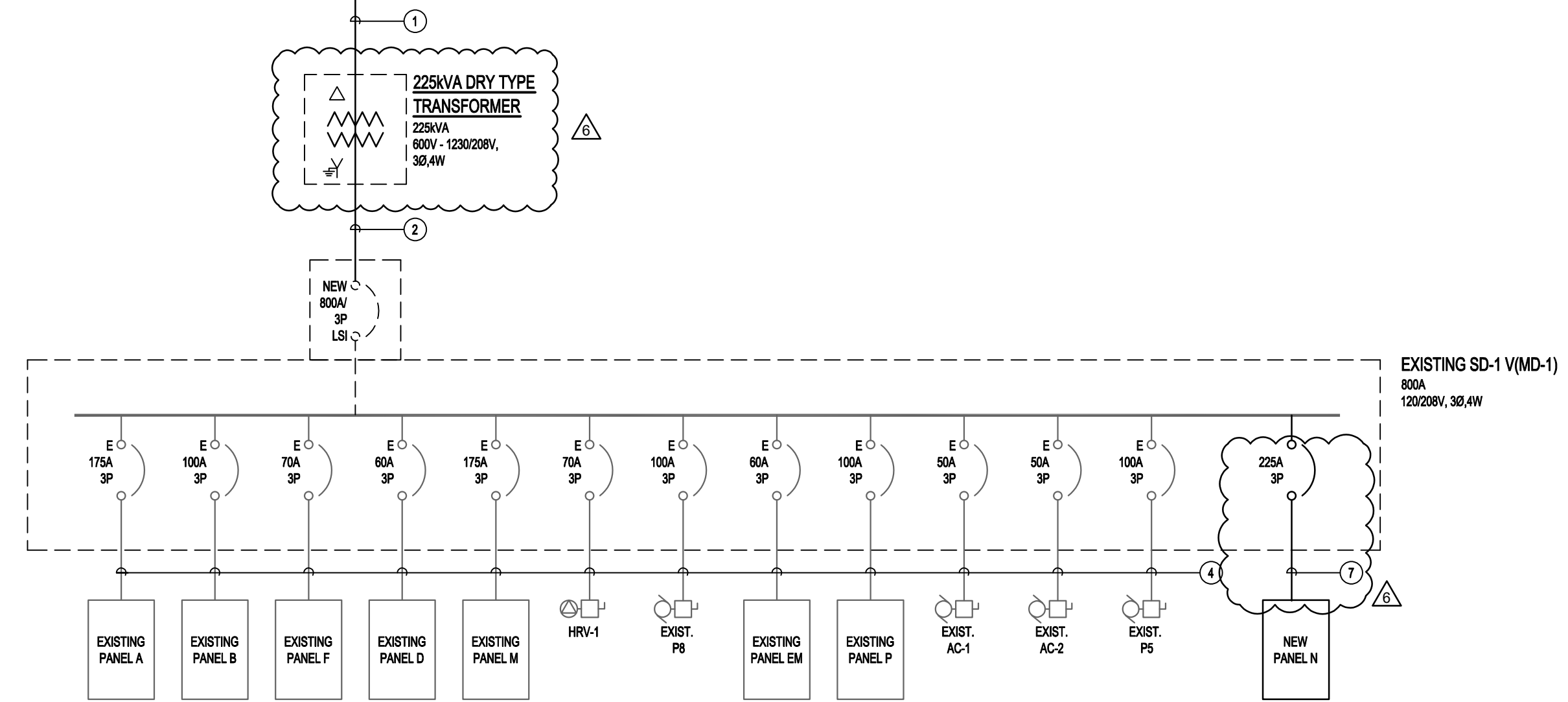
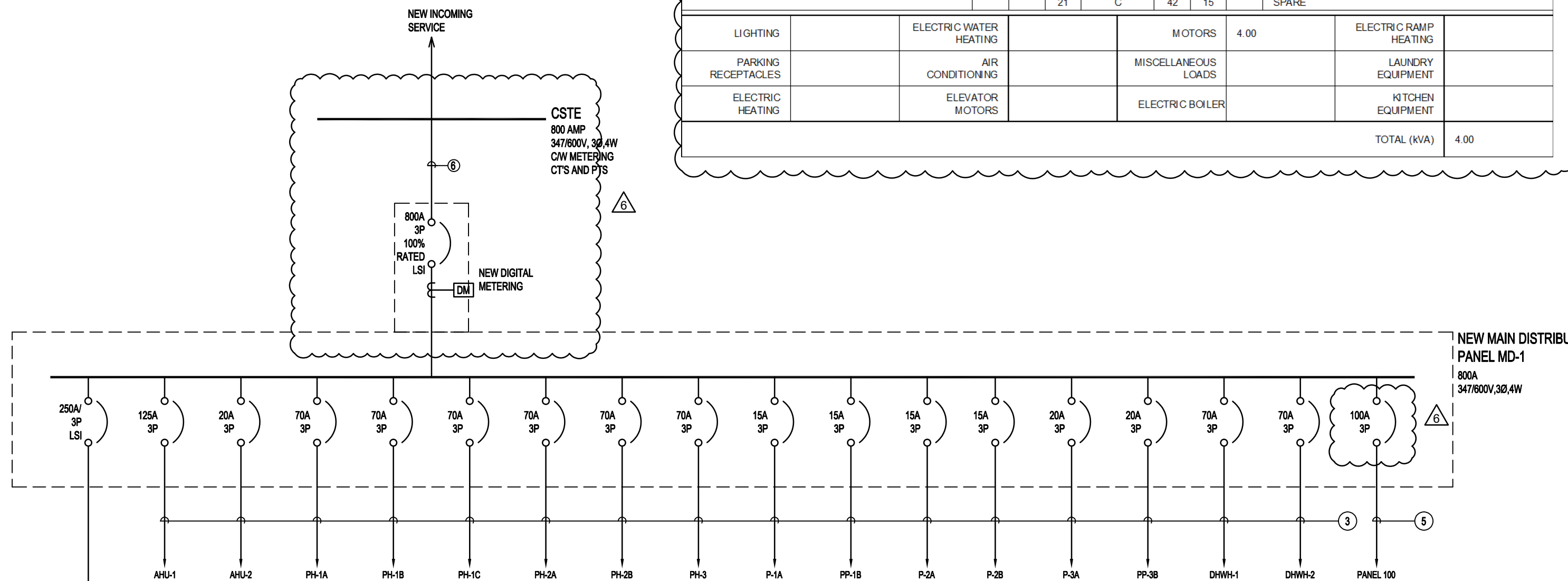


PANEL A (NEW)		FED FROM:						
VOLTAGE: 120/208V/3Ø/4W		MOUNTING: RECESSED (FLUSH)						
POWER: 225A MAINS		POWER: NORMAL						
DESCRIPTION	LOAD	BRKR	CCT	PHASE	CCT	BRKR	LOAD	DESCRIPTION
LIGHTS ABOVE POOL AREA - E. SIDE	15	1	A	43	15			LIGHTS
LIGHTS ABOVE POOL AREA - E. SIDE	15	2	B	44	15			LIGHTS
LIGHTS ABOVE POOL AREA - E. SIDE	15	3	C	45	15			LIGHTS
LIGHTS ABOVE POOL AREA - E. SIDE	15	4	A	46	15			LIGHTS
LIGHTS ABOVE POOL AREA - E. SIDE	15	5	B	47	15			LIGHTS
LIGHTS ABOVE POOL AREA - E. SIDE	15	6	C	48	15			LIGHTS
LIGHTS ABOVE POOL AREA - S. SIDE	15	7	A	49	15			LIGHTS SAUNA
LIGHTS ABOVE POOL AREA - S. SIDE	15	8	B	50	15			
LIGHTS ABOVE POOL AREA - S. SIDE	15	9	C	51	15			
LIGHTS ABOVE POOL AREA - S. SIDE	15	10	A	52	15			RECEPTACLE LOBBY VENDING MACHINE
LIGHTS ABOVE POOL AREA - S. SIDE	15	11	B	53	15			RECEPTACLE LOBBY VENDING MACHINE
LIGHTS ABOVE POOL AREA - S. SIDE	15	12	C	54	15			RECEPTACLE LOBBY VENDING MACHINE
LIGHTS ABOVE POOL AREA - W. SIDE	15	13	A	55	15			
LIGHTS ABOVE POOL AREA - W. SIDE	15	14	B	56	15			
LIGHTS ABOVE POOL AREA - CENTRE	15	15	C	57	15			SAUNA
LIGHTS ABOVE POOL AREA - CENTRE	15	16	A	58	15			
LIGHTS ABOVE POOL AREA - CENTRE	15	17	B	59	15			SAUNA FAN F7
LIGHTS ABOVE POOL AREA - CENTRE	15	18	C	60	15			EXHAUST FAN F6
SUB FEEDER TO PANEL R	15	19	A	61	15			FIRST AID RM EXHAUST FAN
POWER SUPPLY - LIGHTING CONTACTORS	15	20	B	62	15			
RECEPTACLES LOBBY	15	21	C	63	15			MENS WAHRM EXHAUST FAN F10
LOCKER ROOM EXHAUST	15	22	A	64	15			LIGHTS ABOVE POOL EAST SIDE
ROOF GFCI	15	23	B	65	15			LIGHTS ABOVE POOL WEST & NORTH SIDE
HEAT TRACE HRU	15	24	C	66	15			LIGHTS ABOVE POOL EAST SIDE
ENGINEERS OFFICE HRU	15	25	A	67	15			LIGHTS ABOVE POOL SOUTH SIDE
ENTRANCE AIR CONDITIONER	15	26	B	68	15			LIGHTS ABOVE POOL EAST SIDE
	15	27	C	69	15			LIGHTS ABOVE POOL SOUTH & MIDDLE SIDE
	15	28	A	70	15			LIGHTS ABOVE POOL EAST SIDE
	15	29	B	71	15			LIGHTS ABOVE POOL SOUTH SIDE 3RD ROW
NEW POOL LIGHTS SOUTHEAST	15	30	C	72	15			UNDERWATER LIGHTS
NEW POOL LIGHTS NORTHEAST	15	31	A	73	15			UNDERWATER LIGHTS
HAND FREE PLUMBING CONTROL	15	32	B	74	15			UNDERWATER LIGHTS
DOOR ASSIST	15	33	C	75	15			UNDERWATER LIGHTS
CHANGE TABLE	15	34	A	76	15			UNDERWATER LIGHTS
LIFT	15	35	B	77	15			UNDERWATER LIGHTS
REC UTR BAR/ATRUM UTR	20	36	C	78	15			CEILING FAN
SAUNA	20	37	A	79	15			CEILING FAN
DOOR ASSIST	15	38	B	80	15			
REC DRINKING FOUNTAIN	15	39	C	81	15			
HANDS FREE PLUMBING CONTROL	15	40	A	82	15			
REC GROOMING	20	41	B	83	15			
	15	42	C	84	15			
LIGHTING		ELECTRIC WATER HEATING		MOTORS		ELECTRIC RAMP HEATING		
PARKING RECEPTACLES		AIR CONDITIONING		MISCELLANEOUS LOADS		LAUNDRY EQUIPMENT		
ELECTRIC HEATING		ELEVATOR MOTORS		ELECTRIC BOILER		KITCHEN EQUIPMENT		
							TOTAL (KVA)	

PANEL N		FED FROM:						
VOLTAGE: 120/208V/3Ø/4W		MOUNTING: SURFACE						
POWER: 225A MAINS		POWER: NORMAL						
DESCRIPTION	LOAD	BRKR	CCT	PHASE	CCT	BRKR	LOAD	DESCRIPTION
HAND DRYER	2300	20	1	A	31	20	1200	HEAT TRACE (GFI BREAKER)
HAND DRYER	2300	20	2	B	32	20	600	HEAT TRACE (GFI BREAKER)
HAND DRYER	2300	20	3	C	33	20	600	EXTERIOR RECEPTACLE
HAND DRYER	2300	20	4	A	34	15	600	MOTORIZED DAMPER
HAND DRYER	2300	20	5	B	35	15	100	DRINKING FOUNTAIN
HAND DRYER	2300	20	6	C	36	15	100	EF-5
HAND DRYER	2300	20	7	A	37	15		EF-6
HAND DRYER	2300	20	8	B	38	15		SPARE
HAND DRYER	2300	20	9	C	39	15		SPARE
HAND DRYER	2300	20	10	A	40	15		SPARE
HAND DRYER	2300	20	11	B	41	15		SPARE
HAND DRYER	2300	20	12	C	42	15		SPARE
HAND DRYER	2300	20	13	A	43	15		SPARE
RECEPTACLE	600	15	14	B	44	15		SPARE
RECEPTACLE	600	15	15	C	45	15		SPARE
RECEPTACLE SCANNER	600	15	16	A	46	15		SPARE
RECEPTACLE	600	15	17	B	47	15		SPARE
CAMERA	600	15	18	C	48	15		SPARE
RECEPTACLE POS	600	15	19	A	49	15		SPARE
PRINTER	600	15	20	B	50	15		SPARE
RECEPTACLE	600	15	21	C	51	15		SPARE
RECEPTACLE	600	15	22	A	52	15		SPARE
RECEPTACLE	600	15	23	B	53	15		SPARE
RECEPTACLE	600	15	24	C	54	15		SPARE
RECEPTACLE	600	15	25	A	55	15		SPARE
COPIER	1200	20	26	B	56	15		SPARE
COPIER	1200	20	27	C	57	15		SPARE
RECEPTACLE	1200	20	28	A	58	15		SPARE
RECEPTACLE	1200	20	29	B	59	15		SPARE
HEAT TRACE (GFI BREAKER)	1200	20	30	C	60	15		SPARE
LIGHTING		ELECTRIC WATER HEATING		MOTORS	0.20	ELECTRIC RAMP HEATING		
PARKING RECEPTACLES		AIR CONDITIONING		MISCELLANEOUS LOADS	46.10	LAUNDRY EQUIPMENT		
ELECTRIC HEATING		ELEVATOR MOTORS		ELECTRIC BOILER		KITCHEN EQUIPMENT		
							TOTAL (KVA)	46.30

PANEL EM (EXISTING)		FED FROM:						
VOLTAGE: 120/208V/3Ø/4W		MOUNTING: RECESSED (FLUSH)						
POWER: 225A MAINS		POWER: NORMAL						
DESCRIPTION	LOAD	BRKR	CCT	PHASE	CCT	BRKR	LOAD	DESCRIPTION
PNEUMATIC PANEL POWER SUPPLY	15	1	A	13	15			EMERGENCY WATER MAKE-UP FOR BOILERS
WOMENS CHANGE RM/SHOWER EMERG LIGHTS	15	2	B	14	15			CONDENSATE PUMP P2
WOMENS SHOWER & STAIRS EMERG LIGHTS	15	3	C	15	15			CONDENSATE PUMP P3 & CONDENSATE LEVEL CTRL
LOBBY & OBSERVATION RMs EMERG LIGHTS	15	4	A	16	15			COMPRESSOR P9
LIFE GUARD & FIRST AID EMERG LIGHTS	15	5	B	17	15			POWER SUPPLY BOILER 1
POOL EAST SIDE EMERG LIGHTS	15	6	C	18	15			POWER SUPPLY BOILER B2
CHLORINE RM EXHAUST FAN F5	15	7	A	19	15			METASYS
POOL WEST SIDE EMERG LIGHTS	15	8	B	20	15			AIR INTAKE FAN IN ELECTRICAL RM F11
POWER SUPPLY RELAY TRANSF. CLOCK	15	9	C	21	15			AIR INTAKE FAN IN ELECTRICAL RM F11
EXIST. LIGHTS	15	10	A	22	15			BOILER CONTROL
BASEMENT EMERGENCY LIGHTS	15	11	B	23	15			BOILER RM GAS DETECTOR
BACKUP COMPRESSOR & RECEPTACLES	15	12	C	24	15			C02/CHLORINE GAS DETECTOR
LIGHTING		ELECTRIC WATER HEATING		MOTORS		ELECTRIC RAMP HEATING		
PARKING RECEPTACLES		AIR CONDITIONING		MISCELLANEOUS LOADS		LAUNDRY EQUIPMENT		
ELECTRIC HEATING		ELEVATOR MOTORS		ELECTRIC BOILER		KITCHEN EQUIPMENT		
							TOTAL (KVA)	

PANEL 100		FED FROM:						
VOLTAGE: 347/600V/3Ø/4W		MOUNTING: SURFACE						
POWER: 225A MAINS		POWER: NORMAL						
DESCRIPTION	LOAD	BRKR	CCT	PHASE	CCT	BRKR	LOAD	DESCRIPTION
P-4	333	15	1	A	22			HC-16
	333	15	2	B	23	20		
	333	15	3	C	24			
SPARE		15	4	A	25			
		15	5	B	26	20		SPARE
		15	6	C	27			
		15	7	A	28	15		SPACE
SPARE		15	8	B	29	15		SPACE
		15	9	C	30	15		SPACE
		15	10	A	31	15		SPACE
SPARE		15	11	B	32	15		SPACE
		15	12	C	33	15		SPACE
	500	15	13	A	34	15		SPACE
P-11	500	15	14	B	35	15		SPACE
	500	15	15	C	36	15		SPACE
	500	15	16	A	37	15		SPACE
P-8	500	15	17	B	38	15		SPACE
	500	15	18	C	39	15		SPACE
	500	15	19	A	40	15		SPACE
SPARE		15	20	B	41	15		SPACE
		15	21	C	42	15		SPACE
LIGHTING		ELECTRIC WATER HEATING		MOTORS	4.00	ELECTRIC RAMP HEATING		
PARKING RECEPTACLES		AIR CONDITIONING		MISCELLANEOUS LOADS		LAUNDRY EQUIPMENT		
ELECTRIC HEATING		ELEVATOR MOTORS		ELECTRIC BOILER		KITCHEN EQUIPMENT		
							TOTAL (KVA)	4.00



1 SINGLE LINE DISTRIBUTION SCHEMATIC
SCALE: NTS

TYPE	DESCRIPTION	AMPACITY
1	3#300MCM RW90 #1/0 GRN IN 3" C	285
2	2 X (4#750 MCM RW90 #3/0 GRN IN 4" C)	950
3	REFER TO ME SHEET	
4	EXISTING FEEDER TO REMAIN	
5	4#3 RW90-INT-1/4" C	190
6	3x (4" C #500 MCM ACWU) DIRECT BURIED DIAGRAM D11, TABLE D11B, DETAIL 3	3x270 = 810
7	4# RW90 IN 2" C (53MM)	200



2	JULY 13, 2022	ISSUED FOR ADD#06	
1	JUNE 21, 2022	ISSUED FOR CONSTRUCTION	DG
No.	Date	Issue / Revision	By

Drawn By: MFP
Printing Date:

Drawings and specifications, as instruments of service are the property of the architects, the copyright in the same being reserved to them. No reproduction may be made without the permission of the architects, and when made, must bear their names. All prints to be returned.

The contractor is to verify dimensions and data noted herein with conditions on the site and is held responsible for reporting any discrepancy to the architects for adjustment.



CITY OF WINNIPEG
BONIVITAL POOL RENEWAL

1215 Archibald St, Winnipeg, MB.

PANEL SCHEDULES
DISTRIBUTION
SCHEMATIC